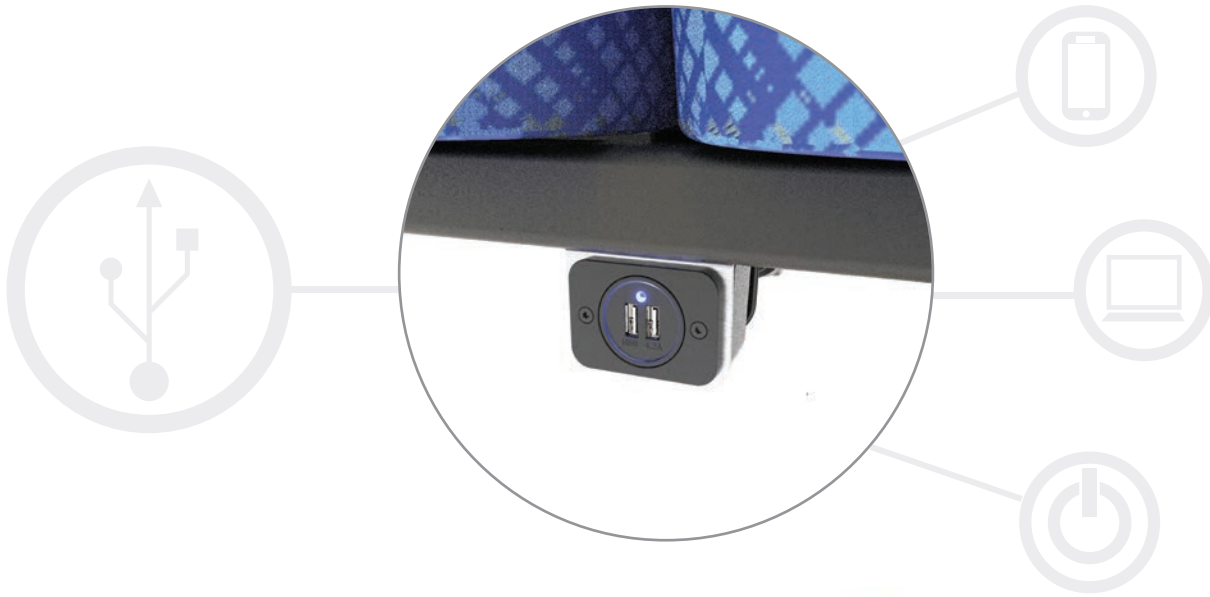




2000 Series USB Power

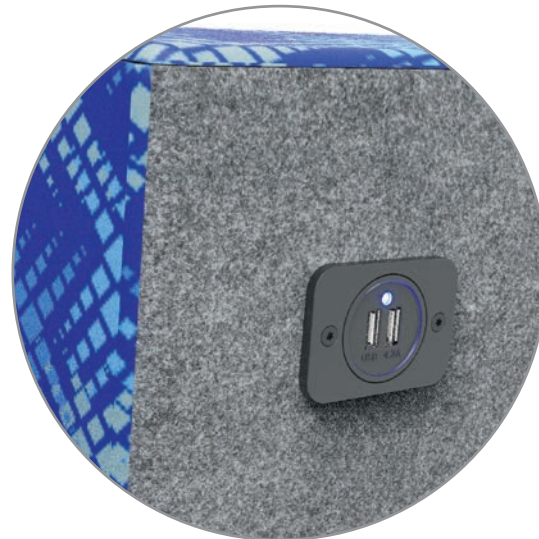


USB Power

One integrated dual port power outlet can be provided for each sitting of a **2000 Series** seating layout. Applicable to standard Transverse seats, excluding A.D.A. area Slider seats and Rear Cross sittings. Low voltage DC power capable of charging most mobile devices including phones or tablets.

Specifications

- 5-Volt / 21-Watt Power Output per Module
- Power "On" Blue LED Indicator Light
- Up to 2.5-Amp Output per Port
- 12/24-Volt DC Power Input
- Reverse Polarity Protected
- FCC Part-15B and SAE J1113-11 Compliant
- IP24 Rating for Water Spray Intrusion



Rear mount is only available on the 2096.

Our Mission

Since 1886, American Seating has set the standard for product design, durability and comfort. Our first transportation seat was introduced in 1931, and today we remain committed to exceeding the expectations of our customers. Our achievements serve as the platform for new and innovative products that are the benchmarks of our industry.



801 Broadway Ave. NW, Grand Rapids, MI 49504-4499
Phone 616-732-6600 800-748-0268 FAX 616-732-6401
americanseating.com

American Seating is a registered trademarks of American Seating Company
Form No. T-USB2000-18 ©2018 American Seating Company



All products designed, engineered, manufactured, and tested in the USA.



American Seating is committed to lessening our impact on the planet through responsible stewardship of our environment.